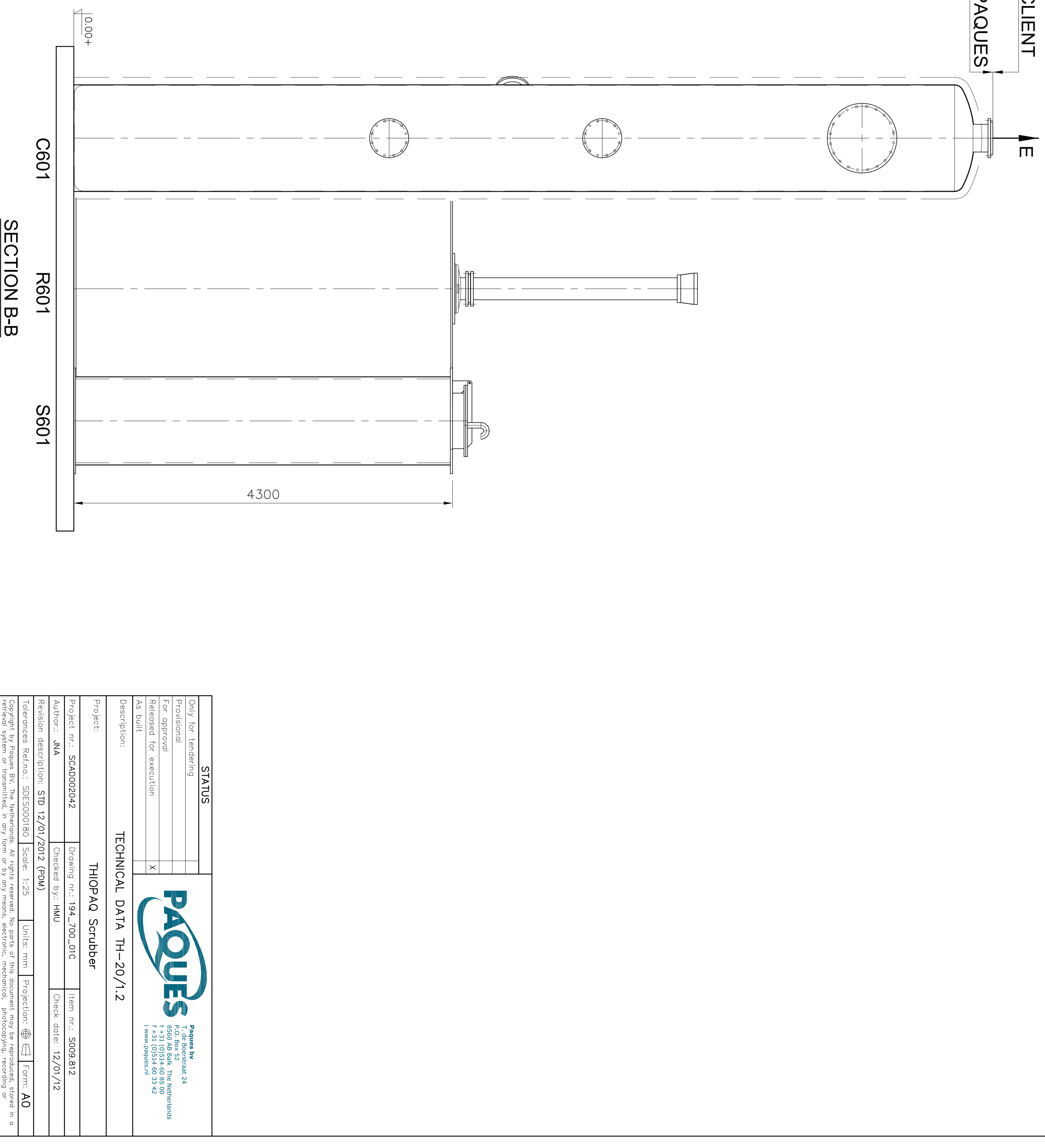
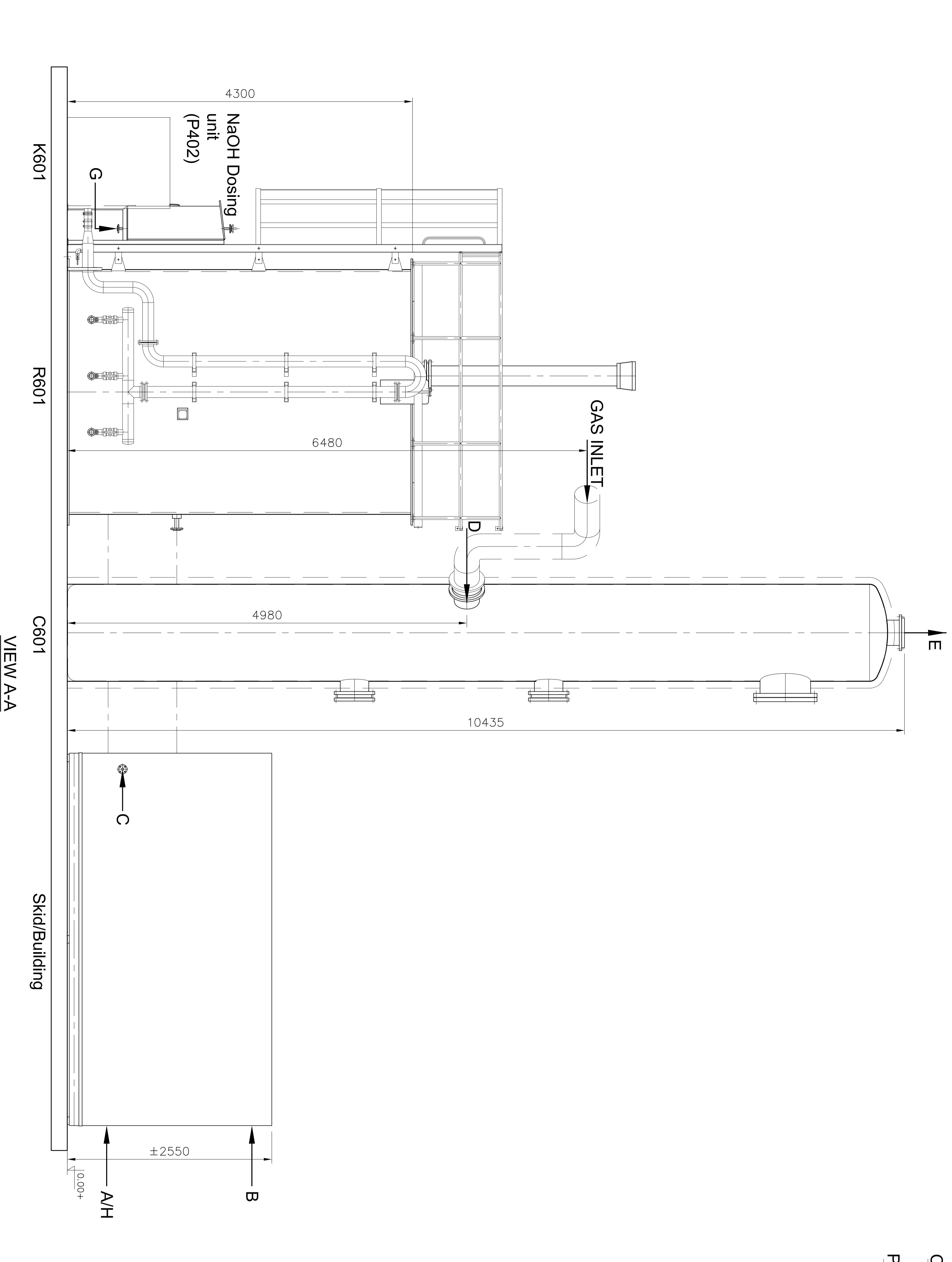



General:		Medium:	Biogas
Range Gas Flow [Nm ³ /h]	300-1400		
Operating pressure: [mbar]	30-70		
Flanges/PN:	DIN 2501 (Except manholes) SMALLER THAN DN100; PN10		
Remarks:	Max. windspeed 28.3 m/s (acc. to DIN 1055 part 4) Seismic load not included Dimensions in [mm]		
Components:			
	Volume (m ³): (working volume)	Weight empty (kg)	Weight running (kg) Dens.mass: 1080 Kg/m ³
Scrubber C601	2.26 (packed bed)	1400	5500
Biological Reactor R601	21.1	1100	24500
Sulphur Sealer S601	2.5	405	3200
Nutrients Vessel T401	100 ltr.		
Skid/building			3500
Ties in/out:			
Point	Description:	Type:	Dimension:
Point A	Instrument air	Instrument quality (dehumidified/dust-free)	3 m ³ /h/Pressure 230/400VAC
Point B	Electric feed cable	Inclusive N + PE	32 Ampere/25 MW
Point C	Softened water	Flange/DIN 2501	DN25/PN10/3 m ³ /h/Pressure min. 2.5-max. 6 bar/ < 10° DH
Point D	Gas inlet	Flange/DIN 2501	DN300/PN10/Pressure 30-70 mbar/Stabilised flow
Point E	Gas outlet	Flange/DIN 2501	DN300/PN10/Pressure 30-70 mbar/g
Point F	Sulphur slurry/bleed outlet	Flange/DIN 2501	DN32/PN10
Point G	Causitic (NaOH) concentr.	Flange/DIN 2501	DN20/PN10/Pressure min. 0.1-max. 2 bar
Point H	Telephone connection	Analogue	Analogue
Point I	External alarm signal	Potential free contact	Potential free contact



STATUS	
Only for sending	
Provisional	
For approval	
Released for execution	X
As built	

TECHNICAL DATA TH-20/1.2	
Project:	THIOPAQ Scrubber
Project nr.:	SCAD000042
Author:	JMA
Checked by:	HMU
Revision description:	STD 12/01/2012 (PMD)
Scale:	1:25
Unit:	mm
Projections:	1st Ang. Iso.
Form:	AO

Copyright by Paques BV. All rights reserved. No part of this document may be reproduced, stored in a retrieval system, or transmitted, in any form or by any means, without the prior written permission of Paques BV.	 <p> Paques BV T: +31 (0)54 60 33 42 F: +31 (0)54 60 33 42 www.paques.nl </p>
--	---